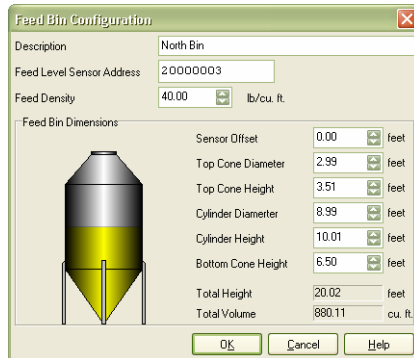
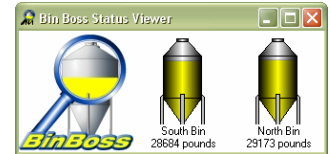


BinBoss feed bin monitoring system

A cost-effective solution for on-farm feed inventory management

BinBoss uses the ultrasonic technology in Phason's Feed Level Sensors to measure the feed level in feed bins. The combination of Feed Level Sensors and the BinBoss software is like having gauges on all your feed bins!

BinBoss allows you to monitor feed levels in up to 32 feed bins from a central computer. No more climbing bins or estimating levels. Easy-to-read windows display feed bin levels, feed reorder warnings, and low feed level alarms.



Monitoring the feed bins at your site using the BinBoss feed monitoring system can help:

- ◆ Reduce feed inventory outages by more-accurately monitoring feed levels
- ◆ Make sure you receive the correct quantity of the correct feed in the correct bin at the correct time
- ◆ Make your site more efficient and more profitable

BinBoss features

- ◆ Automatic bin level monitoring
- ◆ Feed inventory display
- ◆ Adjustable reorder level and low feed alarms
- ◆ Reliable feed delivery detection from auger or pneumatic delivery systems
- ◆ Feed Delivery Reconciler—helps ensure the accuracy of measurements and feed deliveries
- ◆ Status viewers—view the status of a single bin or all bins at the same time
- ◆ Informative reports—Five HTML-based reports allows you to review and print information for any previous period

Bin Summary Report Phason Farms

Report Created: 08-Aug-2006 10:05
Units: feet, pounds



Feed Bin	Feed Height	Feed Weight	Headroom	Status
N.Finisher1	11.98	19447	15802	Low alarm
N.Finisher2	12.08	19708	15541	Reorder Alarm
S.Finisher2	14.35	21781	13468	None
S.Finisher1	14.58	22126	13123	None

Informative, useful reports

- ◆ Bin Summary Report—a list of current feed heights and weights, headroom weights, and status for all feed bins—available as an automatically e-mailed or faxed report.
- ◆ Feed Usage Report—a list of daily feed usage for each bin, sorted by date, and the total usage for the date range.
- ◆ Feed Delivery Report—a list of feed deliveries for each bin, sorted by date, and the total feed delivered for the date range.
- ◆ Alarm Settings Report—a list of the bin height, reorder level, and low feed level for each bin.
- ◆ Alarm History Report—a list of all alarms for the selected date range.

Feed Level Sensor (FLS)

Automatic feed bin level monitoring using ultrasonic technology

The Feed Level Sensor (FLS) works with BinBoss to measure and monitor feed levels in feed bins. The sensor emits ultrasonic pulses that are reflected by the feed. The sensor measures the time the pulses take to reflect back, determines the distance, and then sends the information to the software.

The Feed Level Sensor hardware consists of the control unit, the sensor unit, and the mounting hardware. The FLS can be mounted on new or existing feed bins up to 30 feet high and is compatible with auger or pneumatic delivery systems.

The Feed Level Sensor requires 10 to 14 VDC and draws 125 mA. Phason's Regulated Power Supply (RPS) can supply power for up to eight Feed Level Sensors.

Feed Level Sensor features

- ◆ Low-maintenance design
- ◆ Easy installation in new or existing bins
- ◆ Auger or pneumatic delivery compatibility
- ◆ Reliable, accurate ($\pm 2\%$ of full bin, typical) ultrasonic technology
- ◆ Large operating range: -22 to 104°F (-30 to 40°C)
- ◆ Rugged enclosure (corrosion resistant, water resistant, and fire retardant)
- ◆ Two-year limited warranty



Feed Agitator

An easy and effective way to reduce feed flow problems

The Feed Agitator helps solve many feed flow problems found in silo-type feed bins. The Feed Agitator improves feed flow, which greatly reduces the problem of feed bridging commonly found in high moisture content feed and finely ground feeds.

The Feed Agitator is easy to install and can be installed in new or existing feed bins. It includes all mounting hardware and does not require regular adjustments or calibration.

- ◆ Easy installation
- ◆ Maintenance-free design
- ◆ Durable, rugged construction
- ◆ 90-day limited warranty

