

OMNI-4000 Feed System

The OMNI-4000 Feed System is a "State of the Art" Feed Inventory Management System. The OMNI-4000 Feed System consists of the OMNI-4000 Feed Software module and the Feed Level Sensor.

The OMNI-Feed System is a cost effective solution to on farm feed management. The system measures feed level in feed bin(s) and allows the user to enter feed re-order points and low feed alarm levels. The system measures feed consumption over time for specific animal groups.

The system allows the user to configure several different feeding strategies. This system not only monitors feed disappearance for a particular group of animals, but also manages site feed inventory and assists the scheduling of feed deliveries from the feed mill.

The OMNI-4000 Feed System's advanced ultrasonic technology, supported with the most advanced software available, offers benefits over alternative technologies.

The non-contact level measurement feature and the ease of installation make this method highly desirable over contact level measurement or weight measurement systems. The system uses an advanced level detection algorithm to ensure reliable measurements in difficult bulk material applications

Included in the OMNI-4000 Feed System is the Herd Information system. This system collects information about the population and life stages of the animal herds in your facility. Provides an 'at-a-glance' overview of the status of populations of animals in a facility.

A Feed Mill module is also included so that you can manage your feed rations and the vendors that supply the feed to your operation.

Feed data is made available to the user through Reports and Viewer so that the user can evaluate different feed strategies, look at feed intake, develop feed growth curves, or develop diet budgeting to influence productivity.

Benefits

Site Feed Inventory Management Tool

- ◆ Feed Bin Level Indication
- ◆ Displays Feed inventory
- ◆ Handles various feed and quality types
- ◆ Feed Consumption measured over time and quantities stored.
- ◆ Alarm system to monitor and report on low feed conditions
- ◆ The Feed Reorder Level warns you when to reorder feed
- ◆ Uses a Reliable Non Contact Ultrasonic Technology

Herd Population Information System

- ◆ Lot Tracking of Animal Groups
- ◆ Animal Census
- ◆ Population Status and History
- ◆ Animal Shipment Information
- ◆ Easy to install on a new system or retrofits

Feed Mill Information System

- ◆ Schedule Feed deliveries from the Feed Mill
- ◆ Automatic Feed Reorder Fax System
- ◆ Feed Bins Inventory Report

Feed System Details

- ◆ Easy to install on new system or retrofits
- ◆ Non Intrusive Flush mounting arrangement for Feed Level Sensor
- ◆ Up to 32 Feed Level sensors (32 Bins) per channel can be installed
- ◆ Utilized on feed bins up to 30 feet high
- ◆ Communicates directly with your OMNI-4000 network
- ◆ Automatic sensing of feed delivery using a innovative Tilt Detection Strategy
- ◆ A built-in temperature sensor insures stability and reliability of the Feed Level Sensor over a wide temperature range (-30°C to 40°C or -22°F to 104°F)
- ◆ Feed Level Detection Accuracy is within $\pm 2\%$ of Full Bin
- ◆ 2 year warranty on Feed Level Sensor

Phason Inc.

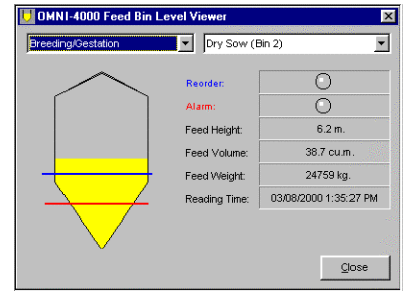
2 Terracon Place
Winnipeg, Manitoba, Canada
R3P 2H7

Phone: 204-233-1400
Fax: 204-233-3252

E-mail: sales@phason.ca
Web site: www.phason.ca

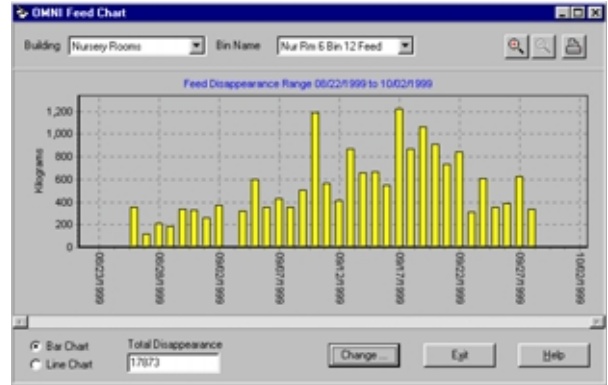
Viewing a Snapshot of a Feed Bin

The Feed Bin Level Viewer shows the user a graphical indication of the quantity of feed remaining in the selected bin. The graphical bin also shows how close the feed level is to the re-order point and out-of-feed alarm point.



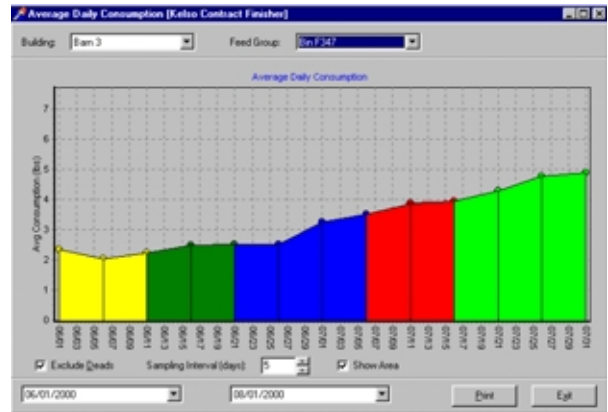
Feed Disappearance Chart

The OMNI Feed Chart shows the user the daily quantity of feed augured from a particular feed bin and daily feed consumption over a User select date range.



Average Feed Consumption

This powerful tool lets you view Average Daily Feed Consumption by feed bin. Evaluate the performance of each group of animals. Include or exclude animals no longer in the group from the calculation. Select the number of days you would like the consumption to be calculated over. Use Viewer to decide when to switch feed ration based on average consumption rates as opposed to animal age. This curve will allow the user to monitor the effect of various feed rations over time.



OMNI-4000 Bin Level Forecast			
Forced Feed Prediction as of Mar 27, 2000			
Bin	Empty	3 Ton	6 Ton
Dry Sow (Bin 2)	Apr 07, 2000	Mar 27, 2000	Apr 02, 2000
Nursing Sow (Bin 3)	Apr 03, 2000	Mar 29, 2000	Apr 01, 2000
Nursery 1 (Bin 5)	Never	Never	Never
Nursery 2 (Bin 6)	Apr 14, 2000	Mar 23, 2000	Apr 07, 2000
Nursery 3 (Bin 7)	Apr 06, 2000	Mar 26, 2000	Apr 02, 2000
Nursery 4 (Bin 8)	Apr 30, 2000	Apr 01, 2000	Apr 15, 2000
Nursery 5 (Bin 10)	Mar 31, 2000	Mar 24, 2000	Mar 27, 2000
Nursery 6 (Bin 11)	Apr 07, 2000	Mar 27, 2000	Apr 02, 2000

Bin Level Forecast

The Bin Level Forecast program monitors the feed bin levels at a site and reports on dates when the feed bin level reaches certain levels. Provides suggested reorder quantity and dates.

Feed Bin Forecast Fax

Shows a sample fax, which would be sent to your office from the Bin Level Forecast System. The fax indicates when a Bin will be empty and how much feed should be ordered. Helps to schedule feed deliveries

Phason Farms
Omni4000 Feed Bin Forecast Report
Fax Date: Dec 03, 1999

Bin	Bin Empty By	Suggested Order Amount
MH12	Dec 07, 1999	0 Ton
MH36	Dec 05, 1999	3 Ton
MH11	Dec 06, 1999	3 Ton
MH35	Dec 10, 1999	0 Ton

Feed Reports

A rich set of reports is included in the OMNI-4000 Feed System. The Feed Report Utility provides you with the flexibility to configure your reports the way you need to see them.

Feed Consumption Report

The Feed Consumption Report provides information on feed disappearance over a selected period.

```

Phason Farms
Feed Consumption Report (Interval=1 Day)
Date Report Ran: 01/07/2000 4:50:51 PM
Report Time Period: 09/01/1999 to 11/30/1999

Units=(lb)

mm/dd/yyyy
Feed Group Name                Feed Weight

09/01/1999
Bin 1 Gest Feed:                3297
Bin 3 Breeding Feed:            5901
Bin 4 FA Feed:                   1466
Nur Rm 1 Bin 6 Feed :           0
Nur Rm 2 Bin 7 Feed:            0
Nur Rm 3 Bin 8 Feed:            0
Nur Rm 4 Bin 9 Feed:            0
Nur Rm 5 Bin 11 Feed:           1457
Nur Rm 6 Bin 12 Feed:           574

09/02/1999
Bin 1 Gest Feed:                16530
Bin 3 Breeding Feed:            1666
Bin 4 FA Feed:                   859
Nur Rm 1 Bin 6 Feed :           0
Nur Rm 2 Bin 7 Feed:            0
Nur Rm 3 Bin 8 Feed:            0
Nur Rm 4 Bin 9 Feed:            0
Nur Rm 5 Bin 11 Feed:           1423
Nur Rm 6 Bin 12 Feed:           814
    
```

```

Phason Farms
Feed Fill Report (Interval=1 Day)
Date Report Ran: 01/07/2000 4:34:59 PM
Report Time Period: 09/01/1999 to 11/30/1999

Units=(lb)

mm/dd/yyyy
Feed Group Name                Fill Time    Fill Weight  Ticket

09/01/1999
Bin 4 FA Feed:                 5:15 PM     5653        N
Nur Rm 3 Bin 8 Feed:           5:27 PM     12189       N
Nur Rm 5 Bin 11 Feed:          5:50 PM     9048        N

09/03/1999
Bin 1 Gest Feed:               1:04 PM     43238       N
Bin 3 Breeding Feed:           1:21 PM     38770       N

09/10/1999
Nur Rm 5 Bin 11 Feed:          1:55 PM     11660       N
Nur Rm 6 Bin 12 Feed:          2:11 PM     12607       N
Bin 1 Gest Feed:               7:02 PM     32703       N
Bin 3 Breeding Feed:           7:13 PM     29194       N
Bin 4 FA Feed:                 7:26 PM     14969       N
Nur Rm 5 Bin 11 Feed:          7:36 PM     6106        N

09/13/1999
Bin 1 Gest Feed:               5:46 PM     36122       N
Bin 3 Breeding Feed:           6:00 PM     33493       N
    
```

Feed Fill Report

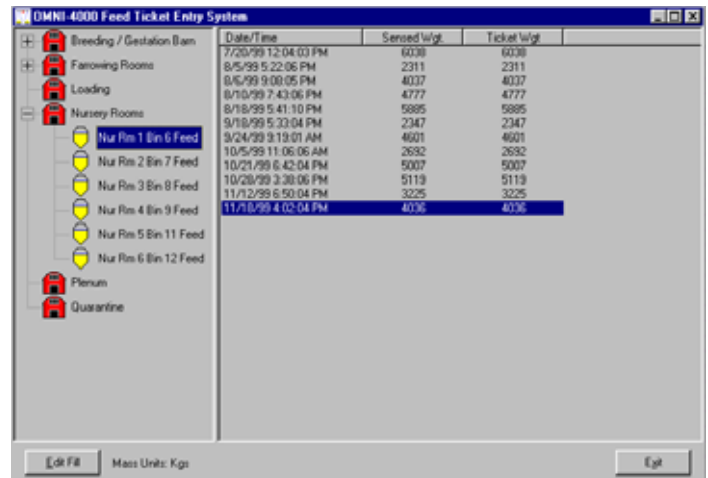
Any time a feed delivery occurs, information on the amount of feed added to a bin is recorded.

Responding to Alarms

The OMNI-4000 Feed System provides alarms for Low Feed Level and for Bin Lid Left Open. The Low Feed Level alarm is set by the user and represents typically one day of feed consumption. The Bin Lid alarm ensures that the lid is not left open after a delivery or inspection and moisture does not get in the feed. If a Feed System alarm condition exists while the OMNI-4000 is running, the alarm will be displayed in the message area on the main screen.

Feed Reconciliation

The Feed Reconcile system is provided to allow the user to correct for discrepancies in the quantity of feed received in a particular bin. The receiving quantity of feed along with the date and time of receipt are displayed. This value will be compared with the system consumption numbers since last receiving and a correction factor generated and applied to all system entries made since last receiving bringing them to actual.



	Date/Time	Sensed Wgt	Ticket Wgt
Breeding / Gestation Barn	7/20/99 12:04:03 PM	6038	6038
Farrowing Rooms	8/5/99 5:22:06 PM	2311	2311
Loading	8/6/99 9:00:05 PM	4037	4037
	8/15/99 7:43:06 PM	4777	4777
Nursery Rooms	8/18/99 5:41:10 PM	5885	5885
	9/18/99 5:33:04 PM	2347	2347
Nur Rm 1 Bin 6 Feed	9/24/99 9:19:01 AM	4601	4601
Nur Rm 2 Bin 7 Feed	10/5/99 11:06:06 AM	2692	2692
Nur Rm 3 Bin 8 Feed	10/21/99 6:42:04 PM	5007	5007
Nur Rm 4 Bin 9 Feed	10/28/99 3:38:06 PM	5119	5119
Nur Rm 5 Bin 11 Feed	11/12/99 6:50:04 PM	3225	3225
Nur Rm 6 Bin 12 Feed	11/18/99 4:02:04 PM	4036	4036
Plenum			
Quarantine			

