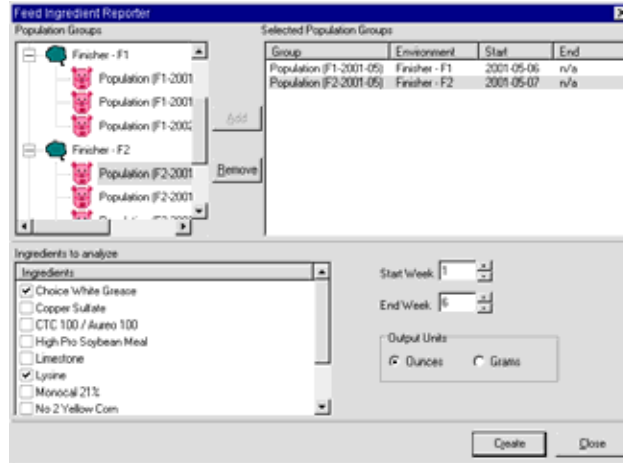


Feed Ingredients Report

A valuable feed analysis tool that compares the consumption of ingredients in a ration



The Feed Ingredients Report allows you to compare the feed consumption of one cycle of animals (a population group) to other population groups.

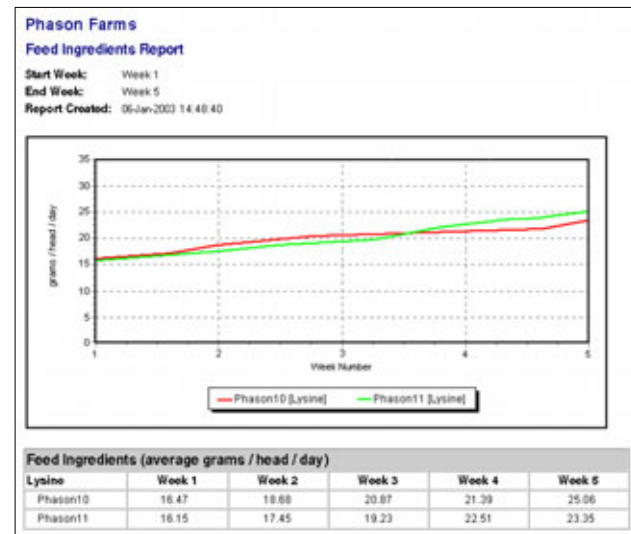
The report analyzes the average consumption of selected ingredients in a ration. You can then compare the differences in consumption to the average weights of the animals in the population group to determine the most profitable diet for your animals.

The Feed Ingredients Report is an extremely valuable tool for looking at the relationship between an ingredient in a ration and the average feed consumption per animal. The report can help you determine if a ration requires any changes.

Comparing the feed consumption of population groups that have been raised in different barns can help determine growth curves. The Feed Ingredients Report is included in the OMNI-Feed module.

Features

- ◆ Information at a glance
- ◆ Easy-to-use display
- ◆ Flexible information display
 - ◆ ounces or grams per animal, per day
 - ◆ up to eight items and up to 52 weeks of consumption on a single chart
- ◆ Versatile HTML report—can be printed, e-mailed, or saved on disk



Other requirements and information

- ◆ Requires OMNI-4000 software, version 3.05 or higher
- ◆ Included in the OMNI-Feed module, version 3.20 or higher

For more information about the Feed Ingredients Report, OMNI-Feed, or other OMNI modules or controls, contact your dealer or visit www.phason.ca.