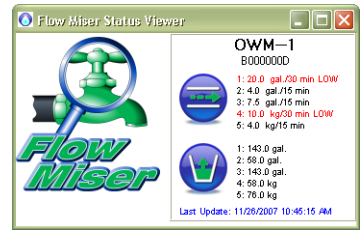


FlowMiser

A cost-effective and versatile solution for monitoring flow rates and daily usage



The FlowMiser software works with the Phason Flow Monitors to automatically monitor flow rates and usage, and provides tools to help you analyze and add intelligence to the information.

FlowMiser has a variety of applications

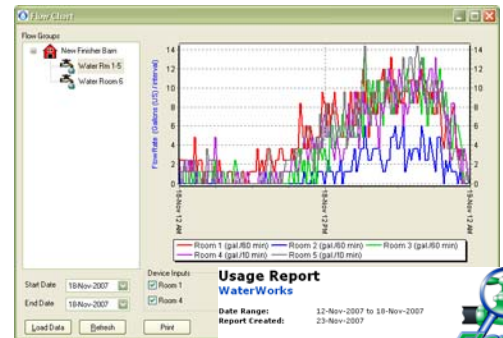
One of the main uses for FlowMiser is monitoring water flow rates and usage in livestock operations. FlowMiser can help producers ensure that water systems are intact, working efficiently and economically for producing and maintaining healthy, productive animals.

FlowMiser can help livestock producers and others with similar needs ensure effective management of a critical resource, water, while identifying and controlling cost. Other uses of FlowMiser include:

- ◆ Greenhouses and plant propagation facilities – plants have highly-sensitive needs for controlled water and nutrient supply. FlowMiser can monitor water and water-soluble fertilizer systems.
- ◆ Vehicle and equipment wash stations
- ◆ Residential or municipal water supply systems, especially those supplied from remote locations
- ◆ Fluid management – facilities that manage gases or liquids that flow through a meter can use FlowMiser to find ways to reduce risk, assure high performance, and lower costs.

Features

- ◆ Automatic data collection with a variety of monitoring options – the system automatically counts pulses from *any* dry contact pulse output and then converts the data to flow rate and usage, in weight or volume.
- ◆ Information at a glance – the FlowMiser Status Viewer displays flow rate, usage, and alarm information for *all* your Phason Flow Monitors.
- ◆ Informative, easy-to-interpret charts and reports
 - ◆ **Flow Chart** –flow rates for a single Flow Monitor, over a date range.
 - ◆ **Flow Report** –flow rates for the selected pulse counters, over a date range.
 - ◆ **Usage Chart** – daily usage for a single usage group (pulse counter), over a date range.
 - ◆ **Usage Report** – daily and total usage for multiple groups, over a date range.
 - ◆ **Configuration Report** – configuration/settings for all Flow Monitors.



South	
Date	Usage (gallons US)
12-Nov-2007	290.59
13-Nov-2007	268.96
14-Nov-2007	268.57
15-Nov-2007	273.38
16-Nov-2007	278.58
17-Nov-2007	273.38
18-Nov-2007	278.58
Total:	1911.66

Phason Flow Monitor (PFM)

Reliable, accurate monitoring for a variety of applications

The Phason Flow Monitor (PFM) works with the FlowMiser software to automatically monitor flow rates. The PFM has five pulse counting inputs, to which you can connect any dry contact switch.



Features

- ◆ Five pulse counting inputs
- ◆ Rugged enclosure (corrosion resistant, water resistant, and fire retardant)
- ◆ Two-year limited warranty

Power Supply Adapter (PA12-800)

The PA12-800 Power Supply Adapter is a basic kit that can provide power for a single Phason Flow Monitor.

Features and ratings

- ◆ Input: 115 VAC, 60 Hz
- ◆ Output: 12 VDC, 800 mA
- ◆ Easy installation
- ◆ Ninety-day limited warranty

