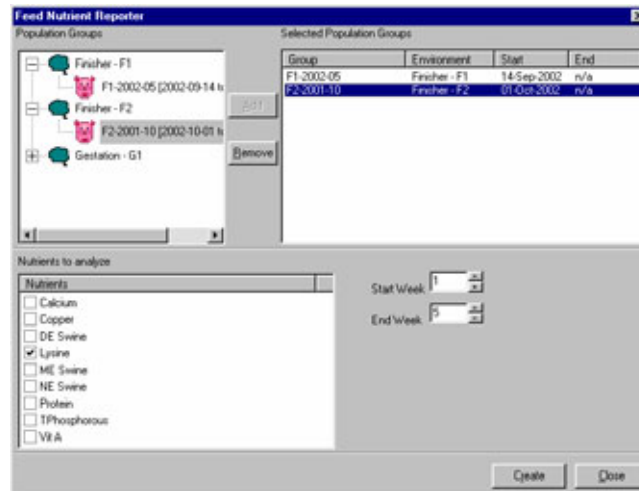


Feed Nutrients Report

A valuable feed analysis tool that compares the consumption of nutrients in a ration



The Feed Nutrients Report allows you to look at the nutrient consumption of one cycle of animals (population group) and compare it to other population groups.

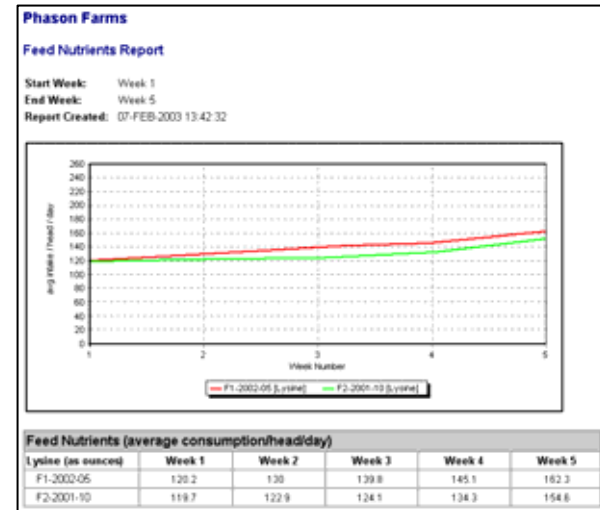
The report analyzes the average consumption (per animal per day) of selected nutrients in a ration. You can compare the differences in consumption to the average weights of the animals in the population group to help determine the most profitable diet for your animals.

The Feed Nutrients Report is an extremely valuable tool for looking at the relationship between a nutrient in a ration and the performance of animals. The report can help you determine if a ration requires any changes.

Comparing the feed consumption of population groups that have been raised in different barns can help determine growth curves. The Feed Nutrients Report is included with the OMNI-Feed module.

Features

- ◆ Information at a glance
- ◆ Easy-to-use display
- ◆ Flexible information display
 - ounces or grams per animal, per day
 - up to eight items and up to 52 weeks of consumption on a single chart
- ◆ Versatile HTML report—can be printed, e-mailed, or saved on disk



Other requirements and information

- ◆ Requires OMNI-4000 software, version 3.055 or higher
- ◆ Included in the OMNI-Feed module, version 3.20 or higher

For more information about the Feed Nutrients Report, OMNI-Feed, or other OMNI modules or controls, contact your dealer or visit www.phason.ca.