

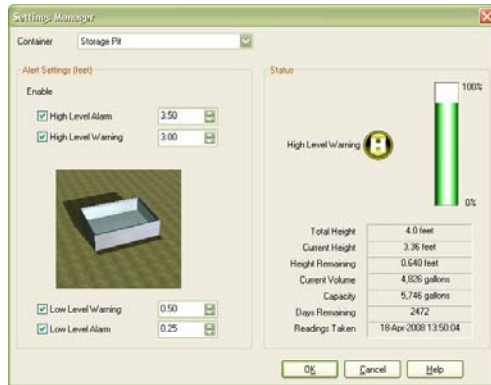
See Level software

Simple monitoring of fluid levels – like having gauges on all your storage containers!



See Level allows you to monitor fluid levels in up to 32 containers from a central computer. No more climbing tanks or estimating levels.

Easy-to-read viewers and reports display levels, forecasts, and alerts.



See Level works with the See Level Sensors to monitor levels. The See Level Sensors use ultrasonic technology to accurately measure levels in "containers". A container can be a cylindrical tank, a square or rectangular pit, or a lagoon.

See Level can monitor virtually any fluid, including drinking or waste water, slurry, and more. Examples of See Level applications include:

- ◆ Monitoring water levels in tanks, cisterns, or reservoirs
- ◆ Monitoring slurry levels in pits or lagoons

Features

- ◆ Automatic level monitoring
- ◆ Programmable alerts with notification and logging
- ◆ **See Level Status Viewer** – a graphic display of all containers, showing the current level (height and volume) and status.
- ◆ Informative reports – review and print information for any previous period
 - ◆ **See Level Report** – lists the daily height, volume, and percentage full. For each container, there is an estimate of the remaining days, height, and volume, based on the average usage/fill rate.
 - ◆ **Alarm History Report** – lists all alarms for the selected date range.

See Level Report AquaX Monitoring

Report Created: 21-Apr-2008
Date Range: 17-Apr-2008 to 21-Apr-2008
Volume Units: Gallons
Height Units: Feet



Alarms shown in red

Cistern

Capacity: 122,206 gallons
High Alarm Level: 19.5 feet
Low Alarm Level: 5.5 feet

Date	Volume	Height	Percent Full
17-Apr-2008	112,703	21.3	85.2
18-Apr-2008	96,461	18.2	73.0
19-Apr-2008	79,512	15.0	60.1
20-Apr-2008	63,871	12.1	48.3

Height Remaining: 13 feet
Volume Remaining: 60,335 gallons
Average Usage Rate: 12,208 gallons per day
Approx. Days Remaining: 5

Alarm History Report AquaX Monitoring

Date Range: 17-Apr-2008 to 19-Apr-2008
Report Created: 21-Apr-2008



17-Apr-2008

Time	Description
08:57:11	Unable to open serial port. Open configuration and select a valid port.
08:57:11	Unable to update because serial port is disconnected
09:02:22	Unable to open serial port. Open configuration and select a valid port.
09:02:22	Unable to update because serial port is disconnected

Total Alarms: 4

19-Apr-2008

Time	Description
13:00:01	High alarm level reached for Cistern
13:10:01	High alarm level reached for Cistern
13:20:01	High alarm level reached for Cistern
13:30:01	High alarm level reached for Cistern
13:40:01	High alarm level reached for Cistern

Total Alarms: 5

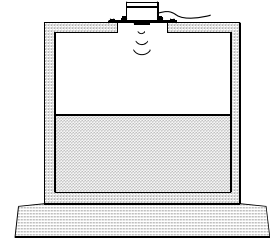
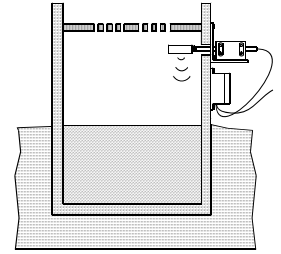
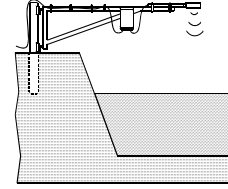
See Level Sensor (SLS)

Ultrasonic fluid level monitoring technology

- ◆ Model **SLS** is designed for monitoring containers that are not enclosed. Examples include under-slat storage pits, slurry tanks, and lagoons or reservoirs.

A mounting kit is available for aboveground tanks, under-slat storage pits, and many other applications.

- ◆ Models **SLS-E** and **SLS-EH** are designed for monitoring containers that are enclosed. The **EH** model includes extra technology to help prevent frost buildup in temperatures below -20°C . Examples include cisterns with covered tops and septic tanks.



Features

- ◆ Low-maintenance design
- ◆ Easy installation in new or existing storage containers up to 32 feet deep
- ◆ Large operating range: -22 to 104°F (-30 to 40°C)
- ◆ Rugged enclosure (corrosion resistant, water resistant, and fire retardant)
- ◆ Two-year limited warranty

Power Supply Adapter (PA12-800)

The PA12-800 Power Supply Adapter is a basic kit that can provide power for a single See Level Sensor.

Features and ratings

- ◆ Input: 115 VAC, 60 Hz
- ◆ Output: 12 VDC, 800 mA
- ◆ Easy installation
- ◆ Ninety-day limited warranty

