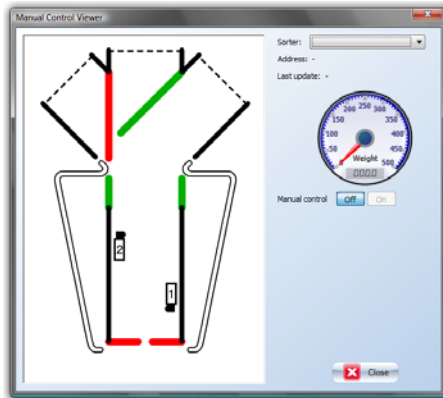
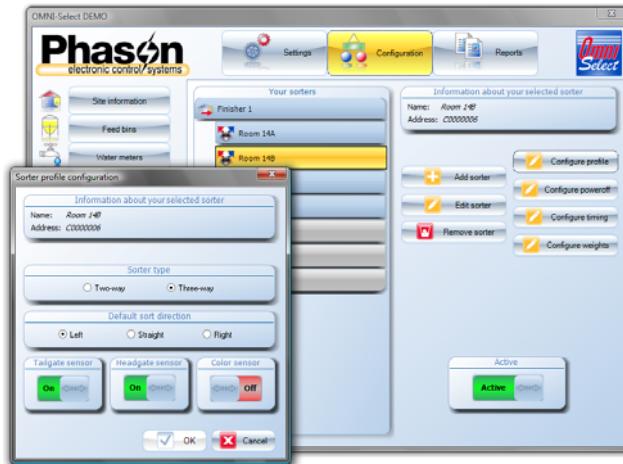


Select™ Sort

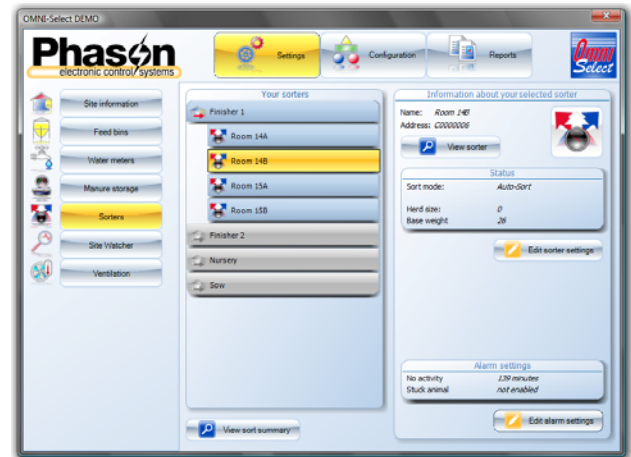
Configure, monitor, and optimize your sorting system

Select™ Sort, along with a personal computer and Pro-Sort Scale Heads, make up the most advanced auto-sort and livestock management system available.

The Auto-sort Management System is designed to enhance profits by providing tools for maximizing scale use, optimizing food court space and feeding programs, and precisely marketing animals. At the same time, the user-friendly design significantly reduces labor input.



Select™ Sort allows you to monitor and configure your scale heads from a central computer. With optional remote access, you can monitor multiple sites from virtually anywhere in the world.



Information at a glance—monitor your targets

Select™ Sort's information at a glance allows you to easily locate the information you need to know.

Within seconds, you can easily find out:

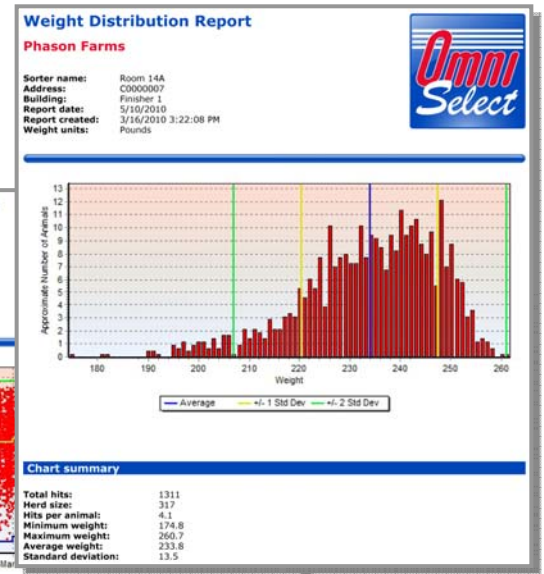
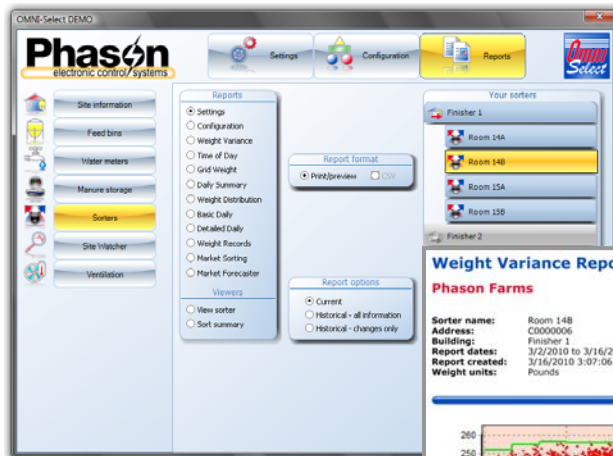
- ◆ Minimum, maximum, average, and median weights
- ◆ Average daily gain—a great indicator of how the herd is performing
- ◆ Weight distribution, standard deviation, and coefficient of variance
- ◆ Hits (weight readings) per animal
- ◆ Weight group and sort direction summaries

Find out about other available Select™ modules at www.phason.ca!



Features and advantages

- ◆ **Auto-sort mode** automatically sorts according to weight group settings
- ◆ **Sort-curve mode** uses industry-leading growth curves to optimize food courts and feeding strategies. Select a predefined curve or adapt one to your herd growth model and management style. Sort curves allow you to easily determine how far you are from your target performance.
- ◆ **Color detection and sorting** sorts painted animals according to special settings
- ◆ **Market sorting** sorts painted and/or weight-range animals according to special settings
- ◆ **Training mode** for training new animals to use the sorter
- ◆ **Emergency mode** allows limited, basic settings directly at the scale head in case of computer problems
- ◆ **Market Forecaster** estimates when and how many animals will be ready to ship over the selected date range
- ◆ **Interactive, easy-to-use displays** make it easy to configure, monitor, and optimize your system
- ◆ **Automatic data collection** automatically collects weight and sorting information and stores it for later viewing
- ◆ **Manual Control Viewer** allows users to quickly interact with and manually operate any scale head, ideal for testing installation and equipment
- ◆ **Sort Summary Viewer** displays information about all sorters and their current market status
- ◆ **No activity alarm, stuck animal alarm, and pen capacity warnings** inform you about problems and potential overcrowding in pens
- ◆ **Twelve informative, customizable reports** are available in printable, portable, and exportable formats



Additional information

For more information about **Select™ Sort**, other **Select™** modules, or Phason products, contact your dealer or visit www.phason.ca.

Weight Variance Report
Phason Farms

Sorter name: Room 14B
Address: C0000006
Building: Finisher 1
Report dates: 3/2/2010 to 3/16/2010
Report created: 3/16/2010 3:07:06 PM
Weight units: Pounds

The chart is a scatter plot showing animal weights over time from 02-Mar-2010 to 05-Mar-2010. The y-axis is labeled 'Animal Weight' and ranges from 170 to 260. A legend indicates Weights (red dots), Minimum (blue line), Maximum (green line), and Average (yellow line).

Date	Total hits	Herd size	Hits per animal	Total weight	Min. weight	Max. weight	Avg. weight	Standard deviation	Average daily gain
3/2/2010	1644	0	0.0	354157.0	105.1	251.7	215.4	17.0	1.36
3/3/2010	1800	0	0.0	390940.7	164.8	254.7	217.2	16.9	1.77
3/4/2010	1810	0	0.0	397227.5	167.9	256.1	219.5	16.4	2.27
3/5/2010	1858	0	0.0	409397.1	166.9	255.8	220.3	16.2	0.88
3/6/2010	1833	0	0.0	409146.0	170.2	255.8	223.2	16.0	2.87
3/7/2010	1613	0	0.0	361871.0	169.9	257.6	224.3	15.7	1.14
3/8/2010	1400	0	0.0	316464.2	172.4	257.4	226.0	15.8	1.70
3/9/2010	1641	0	0.0	371716.9	169.3	257.7	226.5	14.3	0.47
3/10/2010	1613	0	0.0	366884.7	178.6	255.0	227.4	13.9	0.92
3/11/2010	1462	0	0.0	332893.8	175.1	255.5	227.7	13.4	0.26
3/12/2010	1593	0	0.0	366106.5	184.0	258.9	229.8	13.7	2.12
3/13/2010	1259	0	0.0	289720.2	180.5	256.4	230.2	12.9	0.35
3/14/2010	1286	0	0.0	297873.2	171.4	258.0	231.6	13.0	1.45
3/15/2010	1296	0	0.0	301119.7	180.3	257.8	232.3	13.0	0.72
3/16/2010	1171	0	0.0	272272.3	186.5	257.4	232.5	13.1	0.17
Summary	23279	--	--	--	164.8	258.9	225.6	--	1.22